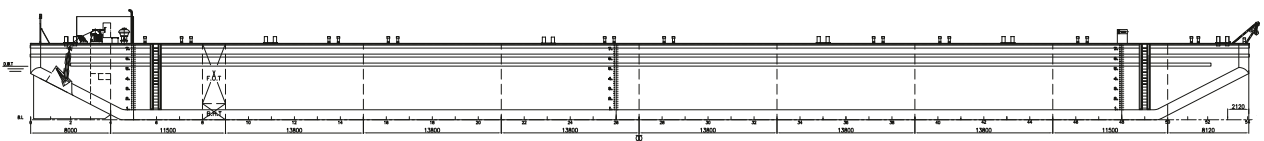


RAN

OFFSHORE

RANBARGE 1



OUTBOARD PROFILE

BALLASTABLE FLAT TOP BARGE 400X120X25 FT

RANBARGE 1

Oceangoing heavy deck cargo barge

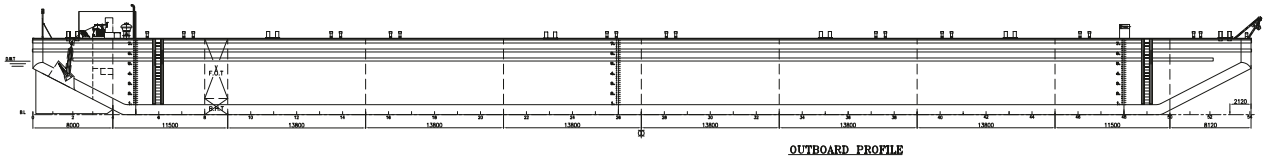
- DWT 19,900
- 2 x 1000m³ pump capacity
- 25T/m² uniform deck strength

Built: 2014 Yard: Poet Shipbuilding & Engineering Pte Ltd Class: ABS +1A1 Flag: Norway	Towing arrangement: General SWL of 110T Maximum BP ACC to DNVGL-ST-N001 : 212 mt.
Dimensions: Length overall: 121,920 m (400`) Breadth overall: 36,576 m (120`) Depth: 7,620 m (25`) Min. draft: 1,5 m Loaded draft: 5,782 m Frame Spacing: 2.000 mm frame 1-4 & 50-54 2.300 mm frame 4-50 Deck plate thickness: 20 mm	Emergency towing arrangement: 140 meters steel wire rope (MBL 425mt) connected to messenger line, pick-up line and floating buoy.
Arrangement and form: Bulkheads: 3 longitudinal, 9 transverse pumproom bulkhead. Double bottom: In pumproom Ballast tanks: 18 Bow: Raked-sloped bottom plate Stern: Raked-sloped bottom plate	Mooring- / Anchor arrangement: Emergency anchor: 1 x Stockless Bower anchor 5610 kg. A-frame for bridle recovery 2 x hydraulic operated Capstan`s, 10 tons pull. 4 double bollards each side
Capacities: Deadweight: abt. 20 000 tonnes Lightship weight: 4900 mt Reg. Tonnage: 9.408 GRT / 2.822 NRT Deck area: 4450 m ² Uniform deck load: 25 tonnes per m ²	Navigational equipment: Daylight signals, LED solar driven navigational lights Misc. ballast control and work desk in deck house
Machinery and ballasting equipment: Generator: 2 x VP diesel 195kW 2 x diesel for ballast pumps Ballast pumps: 2 x 1.000 m ³ /hour Tank Sounding: Kockum Sonics Levelmaster Valve actuators: hydraulic, Rongde	

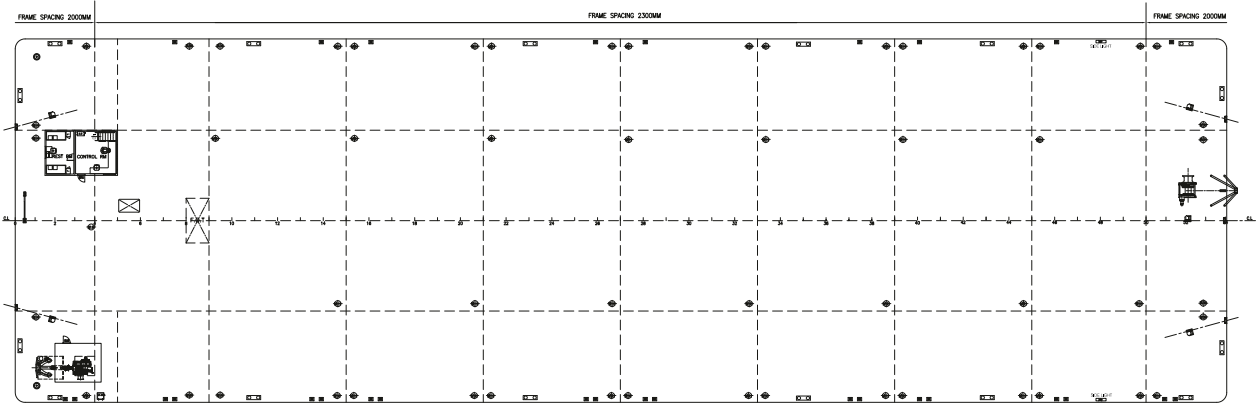
Point loads:

Longitudinal bulkheads / sideshell and transverse bulkheads:	435T
Longitudinal bulkheads / sideshell and transverse webs:	260T
Midspan on transverse webs :	160T
Uniform deck load:	25t/m2

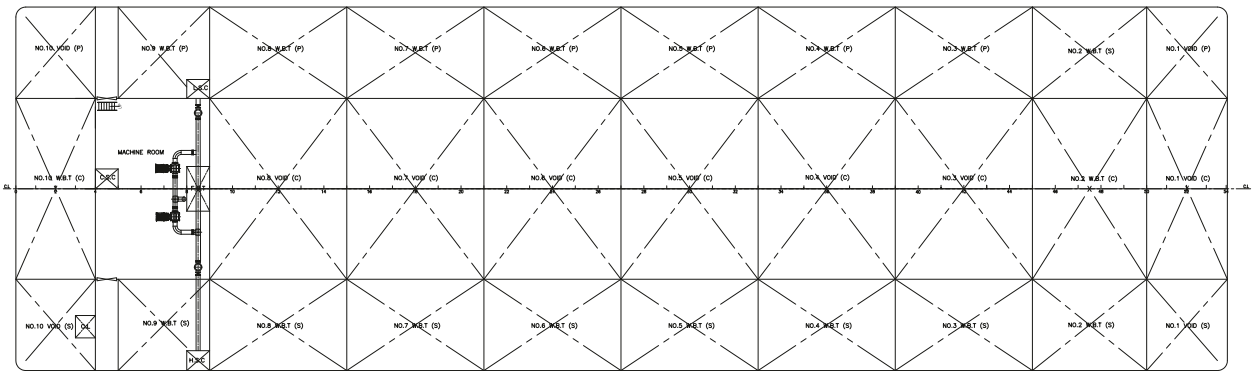
SIDE PLAN



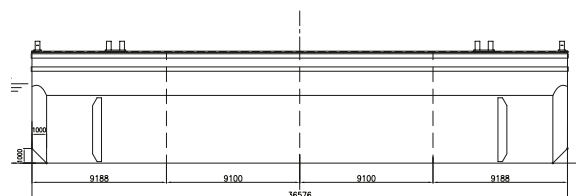
UPPER DECK



BOTTOM PLAN



TANK PLAN



Disclaimer : All information in this brochure is believed to be correct, but not guaranteed.



www.ranoffshore.no



RÁN
OFFSHORE

Rán Offshore AS
Beddingen 14
N-7042 Trondheim, Norway
Tel +47 477 00 222
chartering@ranoffshore.no
www.ranoffshore.no